

PEARL® V-MAX™

V-MAX™ INDUSTRIAL HEPA VACUUM CLEANER

OWNER'S/OPERATOR'S MANUAL



#PAV18.2

#PAV26.2

#PAV36.2

SERIAL NUMBER -

*You should record the Serial Number of your vacuum on this
Owner's/Operator's Manual.*

Caution! Read Safety and General Instructions carefully before using for the first time.

REV. 1

PEARL ABRASIVE CO. HEPA VACUUM

TABLE OF CONTENTS

	PAGE
I. SAFETY PRECAUTIONS.....	3
II. PRODUCT INFORMATION.....	4
III. UNPACKING.....	5
IV. FUNCTION PRINCIPLE.....	5
V. CLEANING THE FILTER.....	5
VI. DUST COLLECTION SYSTEM.....	6
VII. CHANGING THE FILTERS.....	6
VIII. SPECIFICATIONS.....	7
IX. MAINTENANCE.....	7
X. PAV18.2 PARTS LIST.....	8-9
XI. PAV26.2 PARTS LIST.....	10-11
XII. PAV36.2 PARTS LIST.....	12-13
XIII. TROUBLESHOOTING.....	14
XIV. PARTS.....	14
WARRANTY.....	16

This instruction manual is only for the V-Max™ PAV18.2; PAV26.2; PAV36.2 HEPA vacuums.

The V-Max™ HEPA vacuums can only be used with dry, non-flammable material.

Pearl will not be held responsible if the HEPA vacuums is used for other applications or been used in ways other than those explained in this instruction manual.

Before using the machine, please read the safety instructions carefully.

Read the complete instruction manual before using the V-Max™ HEPA vacuums.

All spare part used for the V-Max™ HEPA vacuums must be those specified by Pearl.

i. SAFETY PRECAUTIONS



WARNING! *Read all instructions. As with all machinery there are certain hazards involved with operation and use of the machine. The following basic safety precautions should be followed at all times to reduce the risk of fire, electric shock and serious personal injury to you or others. Keep these important operating instructions with this product.*



1. Must read this operating manual carefully before usage.
Operator must read the designated operating steps before usage.
2. People who do wiring and inspecting must have the professional experience and expertise.
3. The power lines must not be placed at the place where workers can easily step on; once some damages found on the power lines, they must be replaced with new ones. .
4. Must use the power cord originally installed in the machine; please contact the manufacturer in case of extending the power line.
5. Do not do wiring in a humid environment or with wet hands.
6. Be sure the power plug has ground wire and the power socket has circuit breaker
7. Please plug out if don't use the machine for a long time. Otherwise, it will reduce the insulating property and lead to electric shock, electric leakage or fire accident.
8. Do not climb, stand or place stuffs on the machine during its running
9. Do not try to repair or refit the machine personally if something wrong goes with it; please contact the manufacturer for discussing and choosing the best maintenance solution
10. Suggest using the original filter cartridge or bag if needed.
11. This operating manual should be placed with an unbroken condition near to the machine for the convenience of reading by the operator.
12. Please cut off the powder before the overhauling.
13. The casters must be in the state of being stopped before the machine runs.
14. This vacuum must not be plugged in the socket that other electric equipments are using, just in case of fire accident or electric shock due to the overloaded current.
15. The machine cannot suck up the kind of oily or flammable and combustibile smoke dust.
16. Never leave tool running unattended. Turn power "off". Do not leave tool until it comes to a complete stop.

ii. PRODUCT INFORMATION

- Compliant with OSHA's respirable crystalline dust standards
- Heavy-duty metal and aluminum construction
- OSHA compliant for up to 7" grinders
- HEPA Filtration for improved indoor air quality
- Mess-free dust disposal with Pearl continuous bagging system
- 1 (PAV18.2); 2 (PAV26.2), or 3 (PAV36.2) switch system allows you to activate each motor independently
- 1.5" hose (PAV18.2); 2" hose (PAV26.2 & PAV36.2)
- Air pulse filter cleaning system efficiently purges the pre-filter within the closed vacuum
- Certified cylindrical shaped HEPA filter guaranteed 99.99% efficient at 0.3 microns
- Manometer, measures the negative pressure within the tank and alerts the operator when filter needs service
- Large heavy-duty wheels for easy transport over power cords and other floor obstructions
- UL/CSA certified
- Hour meter, helps to monitor HEPA filter life
- Vacuum includes: Floor tool with brush, spare brush, hose, wand, HEPA filter, anti-static filter, and dust bag
- Two-year limited warranty



FRAME CONSTRUCTION

Heavy-duty construction for industrial applications.

- Heavy gauge steel.
- All metal motor housing.
- Heavy-duty replaceable steel parts that withstand the worst environments.



PRE-FILTER CLEANING SYSTEM

No need to remove hose to use pre-filter cleaning system.

- Easy access lever.



HEPA FILTER ACCESS

Easy access to HEPA filters for replacing or cleaning.



FILTER CLEANING SYSTEM

Metal cover to protect filter cleaning system with lever.



SWITCH SYSTEM

Switch system allows you to activate each motor independently.

- Allows use of one motor for small dust shrouds where high CFM's are not needed.
- Easy access switch panel.



LATCHES

Heavy-duty replaceable locking latches that place the correct amount of pressure on the seal.



POWER CORD

Heavy-duty power cord.



WHEELS

Heavy-duty swivel caster locking wheels supported with large bolt to box frame.



INCLUDED HOSE

Heavy-duty hose.

iii. UNPACKING

Please check below listed accessories that comes with your HEPA vacuum.

Contact with your local distributors or sales representatives if above mentioned accessories are not included in the package.

PAV18.2

- 1 - Hose with 2 cuffs
- 1 - Floor tool with brush
- 1 - Spare brush
- 1 - Wand
- 1 - HEPA filter
- 1 - Anti-static filter
- 1 - Dust bag
- 1 - 70/38 reducer

PAV26.2

- 1 - Hose with 2 cuffs
- 1 - Floor tool with brush
- 1 - Spare brush
- 1 - Wand
- 1 - HEPA filter
- 1 - Anti-static filter
- 1 - Dust bag

PAV36.2

- 1 - Hose with 2 cuffs
- 1 - Floor tool with brush
- 1 - Spare brush
- 1 - Wand
- 1 - HEPA filter
- 1 - Anti-static filter
- 1 - Dust bag

iv. FUNCTION PRINCIPLE

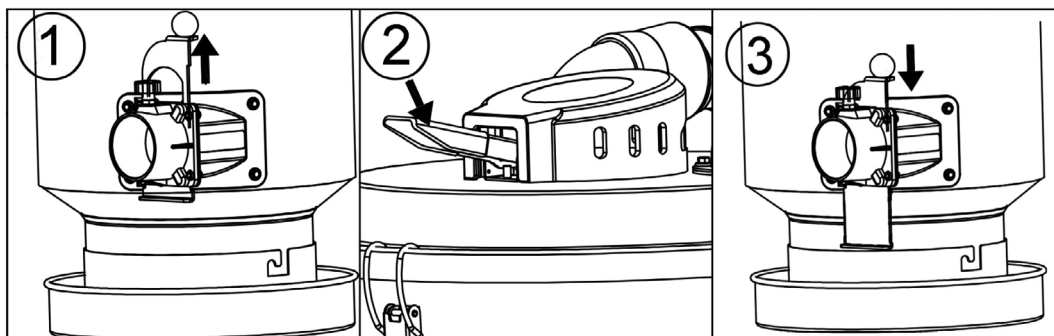
The HEPA vacuums are designed to pick up and extract dry, non-flammable and non-hazardous dust and particles. Contributing an ultimate filtration efficiency up to 99.99% @ 0.3um, the HEPA vacuums are designed with 3 steps filtration system.

1. The dust or particles sucked up through the inlet will drop down by gravity while hitting the wall of drum and partly will drop down by the centrifugal force.
2. The rest of the dust and particles will be blocked by built-in pre-filter with filtration up to 99.5% @1um, while tap the jet-pulse handle, the dust and particles will also drop down.
3. Then very slightly dust will going into the HEPA filter with efficiency up to 99.99@ 0.3um.

v. CLEANING THE FILTER

The filter must be cleaned time to time to remain excellent suction performance. If the vacuum goes high, it means the pre-filters are blocked with large number of dust.

How to clean the filter? First, pull up the metal plate built in the air inlet to block the air inlet, the vacuum will be soon built up. Then press the jet-pulse handle for 5 seconds, and repeat this procedure for 4-5 times. Wait 5 second between every intervals. Finally push down the metal plate for air intake again. See diagram below.



vi. DUST COLLECTION SYSTEM

The dust collection system contains bag holder, nylon puller strap with metal buckle, nylon ties and continuous dropping bags.

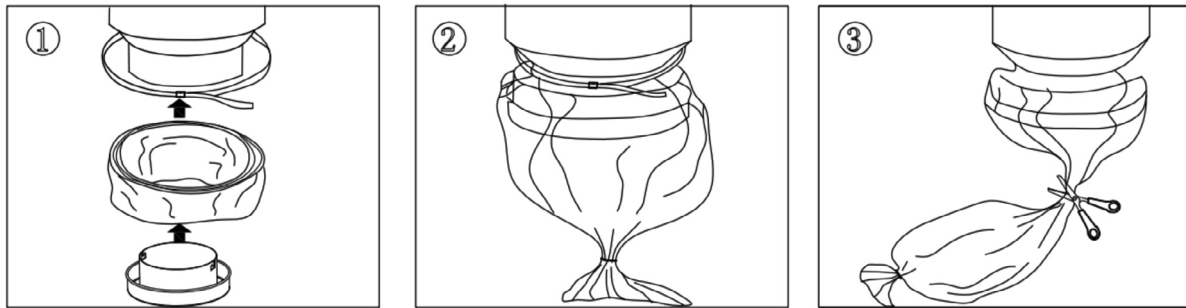
Equipping the continuous bag: firstly unlock the bag holder, put the continuous dropping bag into the holder, tie up the bottom of the bags with nylon ties, and fasten the nylon puller strap for sealing.

Getting rid of the dust: while the bag is full of dust or particles, tie up the top of the bag with 2 nylon ties, finally cut the bag between the 2 nylon ties to prevent the dust from inhaling in the lung or exposing to the atmosphere.

Important: Please remember to throw the bags into the dust bin or assigned area.



Dust Collection Bag



vii. CHANGING THE FILTERS

The operator must wear mask, goggle and gloves while changing the filter.

Must use pre-filters and HEPA filters from us or nearest distributor, no unqualified filters purchased.

PRE-FILTER

- Prepare a clean and empty bag in which the filter will be put.
- Loosen the 3 clamps, take off the main drum cover.
- Lift up the filter gently and put inside the bag, and seal the bag.
- Insert with a new filter.



*Pre-Filter /
Anti-static
Cartridge*

HEPA FILTER

- Prepare a clean and empty bag in which the filter will be put.
- Loose 2 nuts, take the filter cover.
- Lift up the filter gently and put inside the bag, and seal the bag.
- Insert with a new filter.



*HEPA Filter
Cartridge*

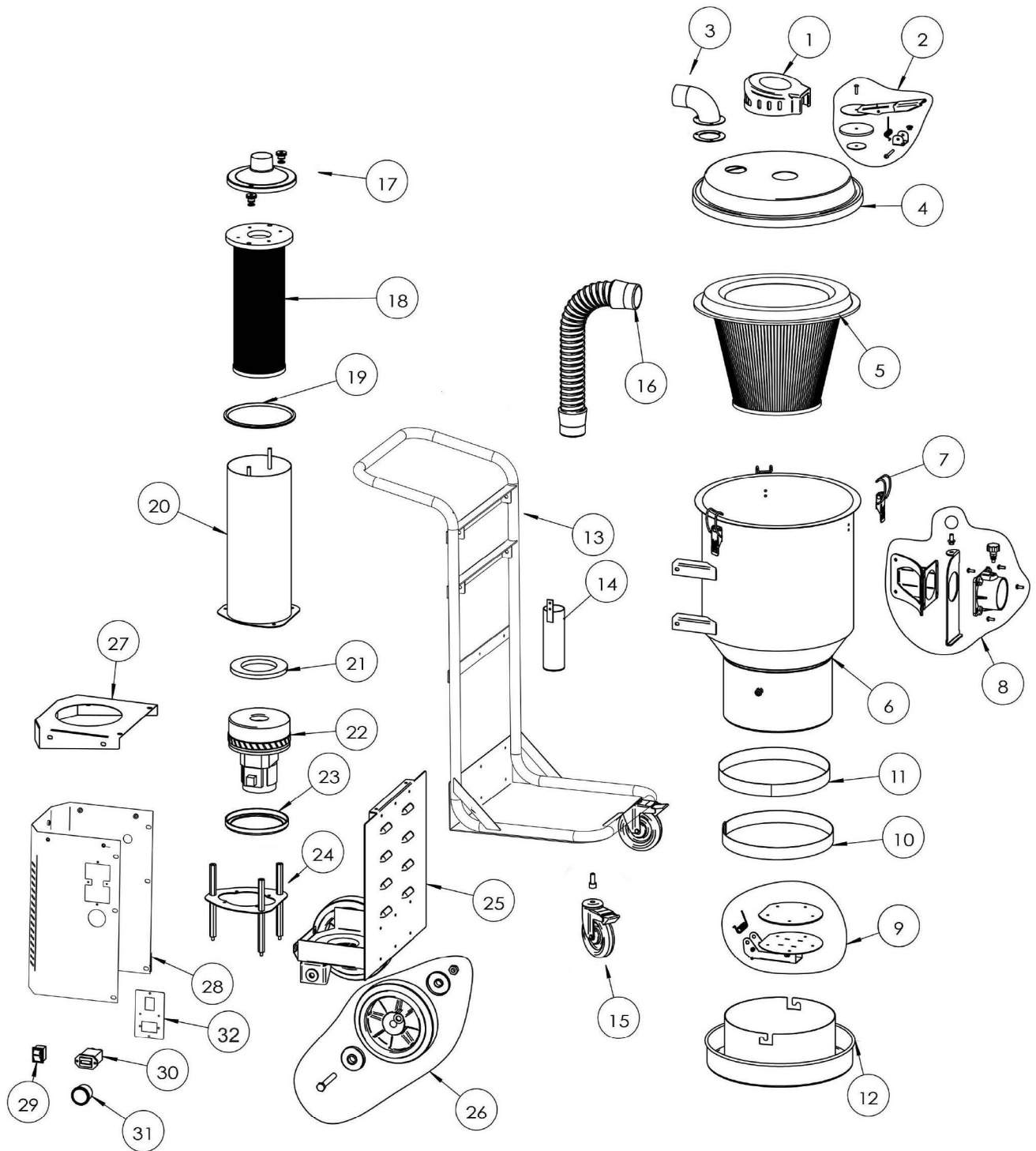
viii. SPECIFICATIONS

SPECIFICATIONS:	#PAV18.2	#PAV26.2	#PAV36.2
Voltage	120v / 60 Hz	120v / 60 Hz	120v / 60 Hz
Power	2.3 HP, 1700 W	3.2 HP, 2400 W	3.2 HP, 2400 W
Current	15 A	18 A	18 A
No. of Switch	1 switch	2 switches	3 switches
Airflow (max)	176 cfm	258 cfm	285 cfm
Water lift	140 in	100 in	72 in
Main hose	1.5 in x 16 ft	2 in x 25 ft	2 in x 25 ft
Air inlet	2 in	2 in	2 in
Pre-filter	99.5% @ 1um	99.5% @ 1um	99.5% @ 1um
Pre-filter area	16ft 2in	30ft 2in	45ft 2in
HEPA filter	99.99% @ 0.3um	99.99% @ 0.3um	99.99% @ 0.3um
Total HEPA filter area	13ft 2in	26ft 2in	39ft 2in
Noise level	72 dB(A)	73 dB(A)	73 dB(A)
Dust Collection	Plastic bag	Plastic bag	Plastic bag
Dimension (LxWxH)	16.8 x 27.2 x 44 in	21.4 x 27.5 x 52 in	21.4 x 32.3 x 57.4 in
Weight	77 lbs	125 lbs	143 lbs

ix. MAINTENANCE

- When cleaning or servicing the machine, you must switch off the machine and remove the plug.
- Avoid cleaning with a high pressure cleaner.
- Before moving the machine from the work area, the machine must first be cleaned.
- All other equipment must be regarded as contaminated and be treated thereafter.
- If possible, use a special suitable room.
- Proper personnel protective equipment must be used.
- All parts which are contaminated after service must be carefully disposed of in plastic bags according to local regulations.
- If the machine has to be used for other purposes, it is extremely important that the machine is cleaned, to avoid the spread of hazardous dust.

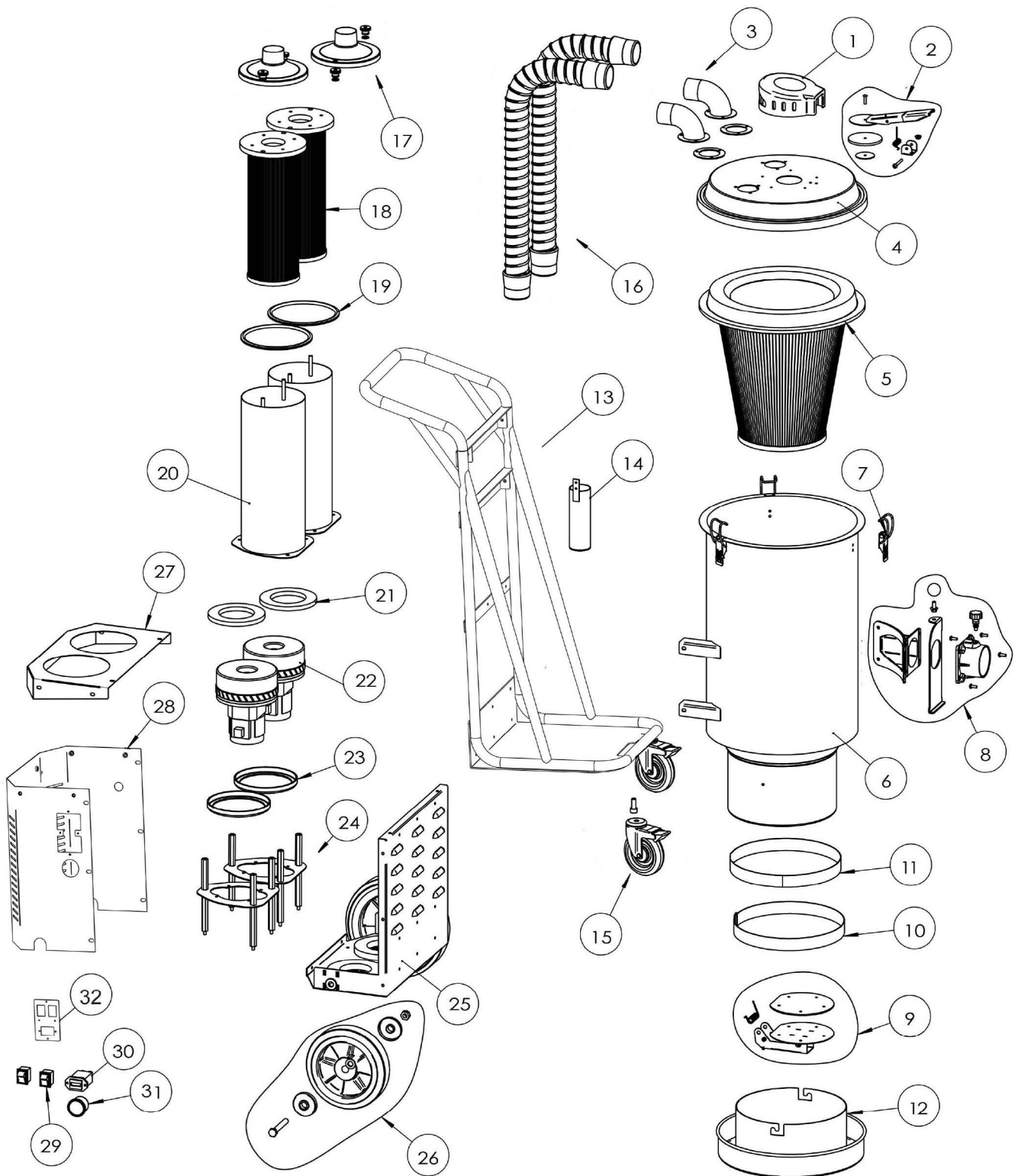
x. PAV18.2 PARTS LIST



PAV18.2 PARTS LIST

ITEM NO	QTY	PART NO	PARTS NAME
1	1	PAV00100	Clean cover
2	1	PAV00200	Jet-pulse cleaning kit
3	1	PAV00300	Elbow with gasket kit
4	1	PAV0101100	Main drum cover
5	1	PAV18001	Pre-filter
6	1	PAV0102200	Main drum
7	3	PAV00400	Clamp
8	1	PAV00500	Air inlet kit
9	1	PAV00600	Flap assembly
10	1	PAV00900	Puller strap
11	1	PAV00800	Anti-slip sealing
12	1	PAV00700	Bag holder
13	1	PAV0103000	Frame assembly
14	1	PAV01000	Strap holder
15	2	PAV01100	4in. castor
16	1	PAV02600	Hose
17	1	PAV01200	Motor tube cover kit
18	1	PAV0104	HEPA filter
19	1	PAV01400	Sealing
20	1	PAV01500	Motor tube
21	1	PAV01600	EVA top crash pad (EVA)
22	1	PAV01800	Motor, 120V/60HZ
23	1	PAV01900	Motor crash pad (Rubber)
24	1	PAV02000	Motor supporter kit
25	1	PAV0105300	Case (bottom)
26	2	PAV02500	8in. wheel
27	1	PAV0105100	Case (cover)
28	1	PAV0105200	Case (side)
29	1	PAV02100	Switch
30	1	PAV02200	Counter
31	1	PAV02300	Manometer
32	1	PAV0105400	Switch panel

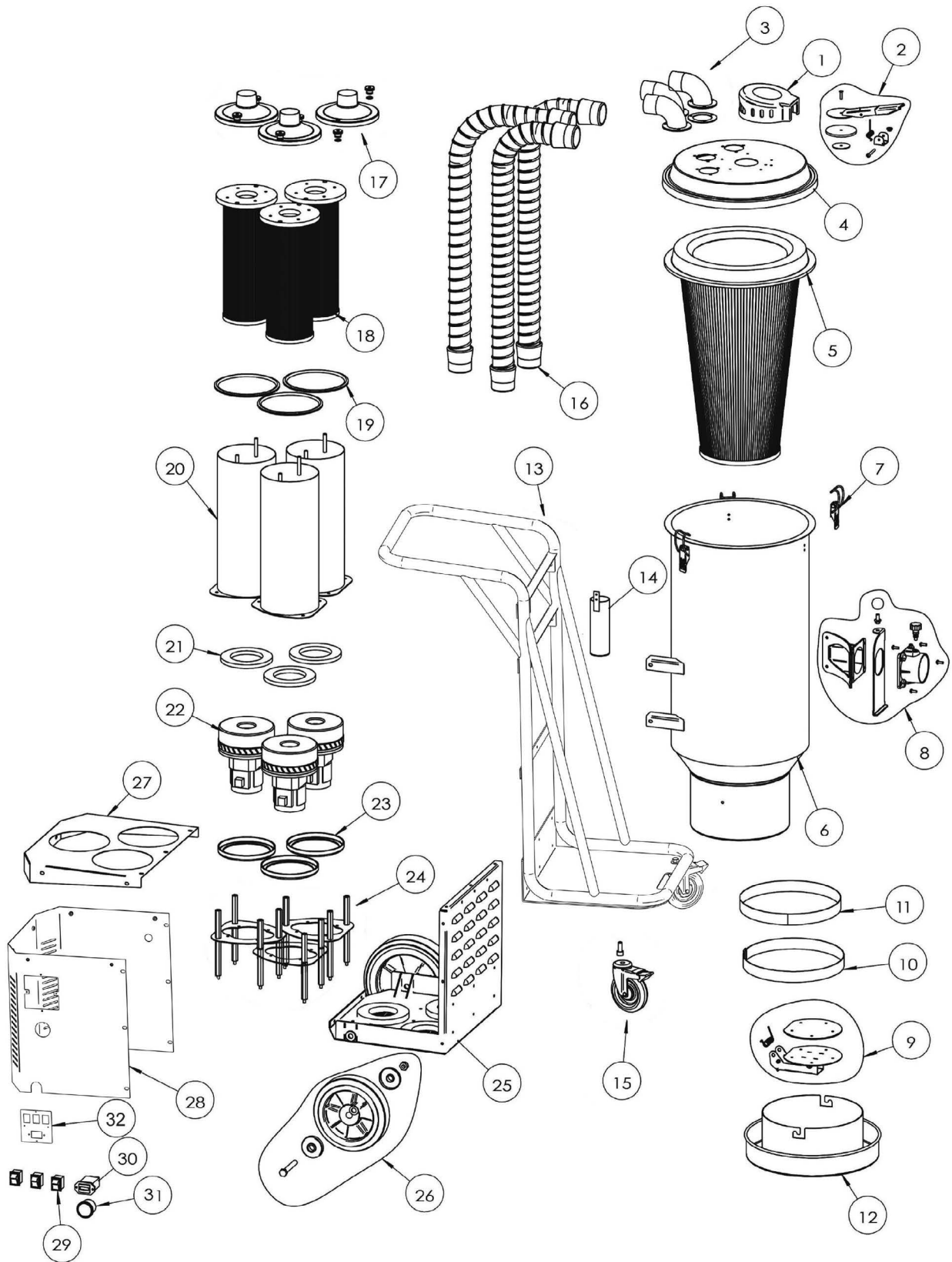
xi. PAV26.2 PARTS LIST



PAV26.2 PARTS LIST

ITEM NO	QTY	PART NO	PARTS NAME
1	1	PAV00100	Clean cover
2	1	PAV00200	Jet-pulse cleaning kit
3	2	PAV00300	Elbow with gasket kit
4	1	PAV0201100	Main drum cover
5	1	PAV26005	Pre-filter
6	1	PAV0202200	Main drum
7	3	PAV00400	Clamp
8	1	PAV00500	Air inlet kit
9	1	PAV00600	Flap assembly
10	1	PAV00900	Puller strap
11	1	PAV00800	Anti-slip sealing
12	1	PAV00700	Bag holder
13	1	PAV0203000	Frame assembly
14	1	PAV01000	Strap holder
15	2	PAV01100	4in. castor
16	2	PAV02700	Hose
17	2	PAV01200	Motor tube cover kit
18	2	PAV0104	HEPA filter
19	2	PAV01600	Sealing
20	2	PAV01500	Motor tube
21	2	PAV01600	EVA top crash pad (EVA)
22	2	PAV01801	Motor, 120V/60HZ
23	2	PAV01900	Motor crash pad (Rubber)
24	2	PAV02000	Motor supporter kit
25	1	PAV0205300	Case (bottom)
26	2	PAV10WHEEL	10in. wheel
27	1	PAV0205100	Case (cover)
28	1	PAV0205200	Case (side)
29	2	PAV02100	Switch
30	1	PAV02200	Counter
31	1	PAV02300	Manometer
32	1	PAV0205400	Switch panel

xii. PAV36.2 PARTS LIST



PAV36.2 PARTS LIST

ITEM NO	QTY	PART NO	PARTS NAME
1	1	PAV00100	Clean kits cover
2	1	PAV00200	Jet-pulse cleaning kit
3	3	PAV00300	Elbow with gasket kit
4	1	PAV0301100	Main drum cover
5	1	PAV36001	Pre-filter
6	1	PAV0302200	Main drum
7	3	PAV00400	Clamp
8	1	PAV00500	Air inlet kit
9	1	PAV00600	Flap assembly
10	1	PAV00900	Puller strap
11	1	PAV00800	Anti-slip sealing
12	1	PAV01000	Bag holder
13	1	PAV0303000	Frame assembly
14	1	PAV01000	Strap holder
15	2	PAV01100	4in. castor
16	3	PAV02800	Hose
17	3	PAV01200	Motor tube cover kit
18	3	PAV0104	HEPA filter
19	3	PAV01400	Sealing
20	3	PAV01500	Motor tube
21	3	PAV01600	EVA top crash pad (EVA)
22	3	PAV01802	Motor, 120V/60HZ
23	3	PAV01900	Motor crash pad (Rubber)
24	3	PAV02000	Motor supporter kit
25	1	PAV0305300	Case (bottom)
26	2	PAV10WHEEL	10in. wheel
27	1	PAV0305100	Case (cover)
28	1	PAV0305200	Case (side)
29	3	PAV02100	Switch
30	1	PAV02200	Counter
31	1	PAV02300	Manometer
32	1	PAV0305400	Switch panel

xiii. TROUBLESHOOTING

The machine owner must follow all the instructions within this user manual and carefully operate and maintain the dust extractor. All the parts needs to be checked timely, confirming all parts is well settled, such as sealing, filters, metal parts, welding point, bags, motors and etc.

PROBLEM	POSSIBLE CAUSE	SOLUTION
MOTOR DOESN'T START	- No power	- Plug in the machine
	- Cable is defective	- Replace the cable
	- Switch is defective	- Replace the switch
MOTOR STOPS IMMEDIATELY AFTER STARTING	- Shortcut in cable/machine	- Order service
MOTOR RUNS BUT THERE IS NOT SUCTION	- Hose not connected	- Connect the hose
	- Hose clogged/ blocked	- Clean the hose
	- No dust collection bag	- Apply the dust collection bag
MOTOR RUNS BUT LACK OF SUCTION	- Hole in hose	- Replace the hose
	- Filter clogged	- Clean or replace the filter
	- Loose top cover	- Adjust
	- Defective gaskets	- Replace the defective gasket
DUST BLOWN FROM MOTOR	- Wrong position or damaged filter system	- Adjust or replace the filter
ABNORMAL NOISE		- Order service

xiv. PARTS



Floor Tool
For PAV18.2
#PAV0100



Floor Tool
For PAV26.2/PAV36.2
#PAV26001



Main Hose
For PAV18.2
#PAV0102
For PAV26.2/PAV36.2
#PAV26003



**Dust Bag 72'
(4-pack)**
#PAV0043



HEPA Filter Cartridge
#PAV0104



Anti-Static Filter Cartridge
For PAV18.2 #PAV18001
For PAV26.2 #PAV26005
For PAV36.2 #PAV36001



Brush
For PAV26.2/PAV36.2
#PAV26002



Wand
For PAV18.2 #PAV0103
For PAV26.2/PAV36.2 #PAV26004

PEARL LIMITED WARRANTY

Pearl Abrasive Co. vacuums are thoroughly inspected and tested before leaving the factory. It is warranted to be free of defects from workmanship for a period of TWO YEAR from the date of original purchase. Pearl will repair or (at our opinion) replace a product, or part thereof, found by Pearl Abrasive Co. to be defective, provided the defective product is returned to Pearl Abrasive Co., freight pre-paid, with proof of purchase.

RGA NUMBER IS REQUIRED. Prior to return of any product or part, a Return Goods Authorization number must be obtained from Pearl Abrasive Co. by fax (562) 928-3857 or calling (800) 969-5561. The owner's name, address, phone number, as well as the serial number of the product, proof of purchase, and a brief statement detailing the nature of the claimed defect, are required for authorization.

This warranty does not apply where:

- Repairs have been made or attempted by others not approved by Pearl Abrasive Co.
- Repairs required because of normal wear and tear
- The tool has been abused, misused or improperly maintained
- Alterations have been made to the tool
- The product is used in a manner not recommended by the manufacturer

IN NO EVENT SHALL PEARL ABRASIVE CO. BE LIABLE FOR ANY INDIRECT, INCIDENTAL OR CONSEQUENTIAL DAMAGES FROM THE SALE OR USE OF THE EQUIPMENT. THIS DISCLAIMER APPLIES BOTH DURING AND AFTER THE TERM OF WARRANTY.

Pearl Abrasive Co. disclaims liability for any implied warranties, including implied warranties of MERCHANTABILITY "AND FITNESS FOR A SPECIFIC PURPOSE", after the two-year term of this warranty.

This warranty gives you specific rights, and you may also have other rights which vary from state to state. Some states do not allow the exclusion or limitation of incidental or consequential damages, so the above limitation or exclusion may not apply to you. Some states do not allow limitation on how long an implied warranty lasts, so the above limitation may not apply to you.

All parts replaced under warranty will be considered as part of the original product and any warranty on these parts will expire coincidentally with the original product warranty.

This warranty supersedes all previous Pearl Abrasive product warranties.

PEARL®

CORPORATE OFFICE: SO. CALIFORNIA • USA
4900 ZAMBRANO ST., COMMERCE, CA 90040-0031
562-927-5561 • FAX 562-928-3857
Toll Free: 800-969-5561
www.pearlabrasive.com

GEORGIA • USA
455 SATELLITE BOULEVARD,
SUWANEE, GA 30024

ONTARIO • CANADA
375-2 PIDO ROAD
PETERBOROUGH, ONTARIO K9J-6X7